



casals



650W Electric Planer



COMPLIES WITH
INTERNATIONAL
IEC60745
SAFETY SPECIFICATIONS



650W

2 YEAR
WARRANTY

Model:
PL82-650

PLEASE READ ALL INSTRUCTIONS BEFORE USE





IMPORTANT:

Thank you for purchasing a Casals Electric Planer (hereinafter referred to as the “planer”).

This manual will assist you in operating and maintaining your planer. This manual is the latest version.

With the continuous improvement and upgrading of this product, the manufacturer reserves the right to modify this manual without notice. The manufacturer shall assume no liability for incorrect information contained in this manual.

This manual is an integral part of the planer. When the planer is transferred to others, this manual should be handed over to the new owner.

Some important information in this manual will be indicated in the following way (please see below). The users should pay special attention to these instructions.

The range of CASALS POWER TOOLS is safe and reliable, but incorrect use of these products may cause personal injury and or damage to your machine. Please read this manual thoroughly before operation as this product is required to operate strictly in accordance with this manual.

IMPORTANT NOTICES:

WARNING: When using the planer, basic safety precautions including the following safety instructions should always be followed to reduce the risk of fire, electric shock and personal injury. Read all these instructions before operating this product and retain these instructions for future reference.

1. GENERAL SAFETY PRECAUTIONS:

1.1. This planer is not intended for use by persons (including children) with reduced physical, sensory or mental capabilities, or lack of experience and knowledge, unless they have been given supervision or instruction concerning use of the planer by a person responsible for their safety.

1.2. The planer may only be operated observing the regulations of the operation documentation and under permanent supervision.

1.3. Do not operate this product in an explosive atmosphere, such as in the presence of flammable liquids, gases or dust.

1.4. Keep children and bystanders away while operating the planer. Distractions can cause you to lose control.

1.5. The planer's plug must match the outlet. Never modify the plug in any way. Do not use any adapter plugs with earthed (grounded) power tools. Unmodi-

fied plugs and matching outlets will reduce risk of electric shock

1.6. Avoid body contact with earthed or grounded surfaces such as tubes, radiators and refrigerators.

There is an increased risk of electric shock if your body is earthed or grounded. (If applicable)

1.7. Do not expose the planer to rain or wet conditions. Water entering the planer will increase the risk of electric shock.

1.8. Do not modify or change the cord. Never use the cord for carrying, pulling or unplugging the power tool. Keep the cord away from heat, oil and sharp edges or moving parts. Damaged or entangled cords increase the risk of electric shock.

1.9. When operating this planer outdoors, use an extension cord suitable for outdoor use. Use of a cord suitable for outdoor use reduces the risk of electric shock.

1.10. Stay alert. Watch what you are doing and use common sense when operating the planer.

1.11. Do not operate the planer when you are tired or under the influence of drugs, alcohol or medication.

1.12. Use safety equipment. Always wear eye protection. Safety equipment such as dust mask, non-skid safety shoes, hardhat, or hearing protection used for appropriate conditions will reduce personal injuries.

1.13. Remove any adjusting key or wrench before turning the planer on. A wrench or a key left attached to a rotating part of the planer may result in personal injury.

1.14. Do not over reach. Keep proper footing and balance at all times. This enables better control of the planer in unexpected situations.

1.15. Dress properly. Do not wear loose clothing or jewellery; Keep your hair, clothing and gloves away from moving parts. Loose clothes, jewellery or long hair can be caught in moving parts.

1.16. Do not force the planer.

1.17. Do not use the planer if the switch does not turn it on and off. If the planer cannot be controlled by the ON/OFF switch, disconnect from power source and return to your nearest service center for repairs.

1.18. Disconnect the plug from the power source before making any adjustments, changing accessories, or storing the planer. Such preventive safety measures reduce the risk of starting the planer accidentally.

1.19. Store out of the reach of children and do not allow persons unfamiliar with the planer or these instructions to operate the planer. The planer is dangerous in the hands of untrained users.

1.20. Use the planer in accordance with these instructions and in the manner intended for the planer, taking into account the working conditions and the work to be performed.





- 1.21. Use of the planer for operations different from intended could result in a hazardous situation.
- 1.22. Have your planer serviced by a qualified repair person using only identical replacement parts. This will ensure that the safety of the planer is maintained.

2. SAFETY STICKERS AND EXPLANATIONS:

A Class II or double insulated electrical appliance is one which has been designed in such a way that it does not require a safety connection to electrical earth. The basic requirement is that no single failure can result in dangerous voltage becoming exposed so that it might cause an electric shock and that this is achieved without relying on an earthed metal casing. This is usually achieved at least in part by having two layers of insulating material surrounding live parts or by using reinforced insulation. Read instruction manual before operating or attempting any maintenance work.



Switch off and remove the plug from the mains before cleaning or maintenance.



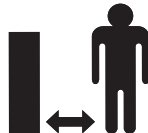
DO NOT leave or use this appliance in the rain.



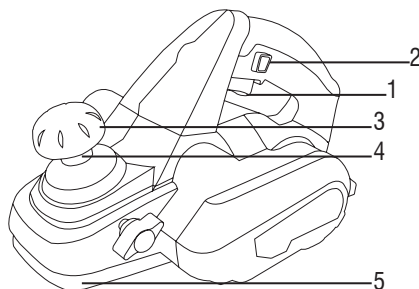
Wear hearing and eye protection.



Keep Bystanders away.



3. COMPONENTS:



1. On/Off Switch
2. Lock Button
3. Planing depth adjustment knob
4. Scale
5. Planing Base

4. Use and care:

4.1 BEFORE USE

WARNING: MAKE SURE THAT THE PLANER IS SWITCHED OFF AND UNPLUGGED FROM THE MAINS SUPPLY BEFORE FITTING OR REMOVING ANY ACCESSORIES.

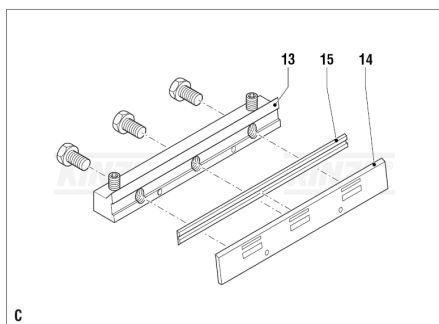
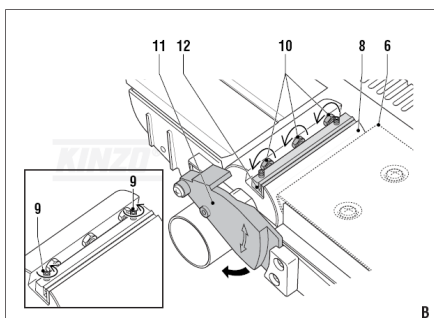
4.1.1. Replacing the blades:

- Place the tool on a table with the planing base (6) pointing towards you.
- Rotate the cylinder (8) until the first blade is visible.
- Loosen the screws (9) a few turns, into the direction as shown.
- Loosen the bolts (10) a few turns, into the direction as shown.
- Keep the screening (11) pressed and remove the holder (12) with the blade from the cylinder, into the direction as shown.
- Disassemble the parts of the holder (13 & 14) so that the blade (15) comes loose.
- The blade has two cutting edges. When both cutting edges are worn, the blade must be replaced.
- Turn the blade so that the new cutting edge is facing upwards or take a new blade.
- Place the blade between the parts of the holder.
- Keep the screening pressed and place the holder with the blade in the cylinder.
- Re-adjust the blade. Fix the blade by fastening the bolts, opposed to the direction as shown.



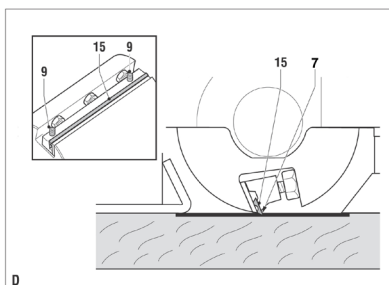


- To replace the other blade, rotate the cylinder 180° and repeat the steps described above.



4.1.2. Adjusting the blade:

- Set the planing depth to 0.
- Turn the screws (9) in or out to determine the correct adjustment.
- The blade (15) is properly adjusted when the cutting edge (7) touches the surface to be planed.



4.1.3. Setting the planing depth:

- Turn the adjustment knob (4) until the desired planing depth is reached.
- The depth setting can be read from the scale (5).

4.2. USING YOUR PLANER:

- 4.2.1. Make sure the area that are planing in is stable and does not move when planing
- 4.2.2. Make sure that the blades reached full speed before you start planing.
- 4.2.3. Guide the planer at a constant speed across the material to be worked on. Do not guide the planer across the surface to be planed too fast. Allow the planer enough time to plane the surface.
- 4.2.4. Hold the planer with both hands using both grips. This ensures optimum control over the machine.

4.3. SWITCHING ON AND OFF:

- 4.3.1. To switch the planer on, keep the lock button (2) depressed and press the on/off switch (1).
- 4.3.2. To switch the planer off, release the on/off switch (1).

5. CLEANING AND MAINTENANCE:

The machine does not require any special maintenance. Regularly clean the ventilation slots and cylinder and blade area.





casals

2 YEAR WARRANTY

Casals guarantees that this product has been thoroughly inspected and tested before being dispatched and is free from mechanical and electrical defects and complies with the applicable safety standards. However, should defects due to faulty material or workmanship develop, under normal domestic use, within 6 months from the date of purchase please return the product to the store from where it was purchased for a full refund or replacement.

The following conditions apply:

1. Please ensure you retain your receipt as this must be presented when making a claim under the terms of the warranty. It is impossible to determine the warranty period without proof of purchase, so please keep this in a safe place.
2. If a refund or exchange is required the product must be complete with all accessories, parts and packaging.
3. Missing parts will render the warranty void.
4. Upon receipt of your appliance check it for any transport damage to ensure it is safe for use. Return it to the store as soon as possible for exchange if damaged. The warranty is void if products are damaged after use, so please do not use the damaged product.
5. Your product is designed for normal domestic household use. Failure to read and comply with the instructions for use, cleaning and maintenance will render your warranty void, so please read these instructions carefully to ensure your safety, and get the most effective use from the product.
6. **Any abuse, negligent, improper use will render the warranty void and Creative Housewares (Pty) Ltd will not be liable for any loss or damage.**
7. This Guarantee will not apply if this tool is damaged by accident or from normal wear and tear.
8. Any attempted repair, or replacement of unauthorised parts will render the warranty void, so please contact an authorised service centre or agent for any service or repair requirements.
9. **Accessories such as bits, blades, sanding disc, cutting lines, etc are excluded from this guarantee.**
10. **Normal consumables parts, such as carbon brushes, bearings, chucks, cord assembly's, spark plugs, recoil pulleys and bump head assembly's are specifically excluded from this guarantee.**

Extended 24 Month Limited Warranty

Casals takes pride in their product quality and therefore offer an extended 24 month limited warranty from the original date of purchase to offer the consumer peace of mind on their purchase.

- Should defects due to faulty material or workmanship develop, under normal domestic use, within 24 months from the original date of purchase, please return the product to the store from where it was purchased for repair free of charge.
- Casals will however replace a product, if the cost of the repair is not commercially viable or if their ability to conduct repair effectively cannot be guaranteed.
- **NB:** The warranty on replaced products will be from the original date of purchase.
- All repairs carry a 3 month warranty even if this falls outside of the 2 year warranty period. Casals will attempt to conduct repairs within reasonable industry standards but cannot be held responsible or liable for any circumstances not under their control.

Before returning your product, check for the following:

1. Your household mains supply socket is working and switched on.
2. The mains supply circuit is not overloaded (White trip switch on your DB board is off).
3. You have read the trouble shooting guide in your Instructions for Use.
4. All accessories and parts are present.

If service or repair becomes necessary outside the guarantee period, this service is still available however all transport/postage, spares and labour costs will be paid by the consumer. All chargeable repairs will require the consumers' approval in writing once the quote is accepted. Once the go-ahead has been received Casals will undertake to conduct the repair within a reasonable time and maintain the condition of the product as received.

For any assistance, service, queries and complaints please contact our Customer Care on 086 111 5006 or e-mail help@creativehousewares.co.za.

Durban

35 Adrain Road, Windermere, Durban,
South Africa, 4001
Tel: +27 31 303 3465
Fax: +27 31 303 8259

Cape Town

20 Tekstiel Street, Parow, Cape Town,
7493, South Africa • P.O. Box 6156 Parow
East, 7501, South Africa Tel: +27 21 931
8117
Fax: +27 21 931 4058

Johannesburg

Unit 25 & 26 San Croy Office park
Die Agora Road, Croydon, 1619
Tel: +27 11 392 5652
Fax: +27 11 392 1694





Be on the look-out for these Casals products at your local outlet:



CS480RE



CS1200RE



IDR500REA



ID710REA



RHD1050



MFS180



BS76-710



OS150



PL82-650



HAG2000A



AG115-500



AG115-710



AG230-710



SP1200



JS55A



DBS900



MFS400



1200EA



CS184L



creative housewares

🏠 20 Tekstiel Street, Parow, Cape Town, 7493, South Africa

✉ P.O. Box 6156 Parow East, 7501, South Africa

☎ +27 21 931 8117 📠 +27 21 931 4058

Service Centre Helpline: 086 111 5006

🌐 www.creativehousewares.co.za

