



casals 



500W Impact Drill



COMPLIES WITH
INTERNATIONAL
IEC60335
SAFETY SPECIFICATIONS



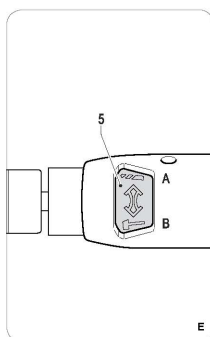
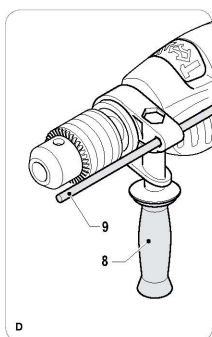
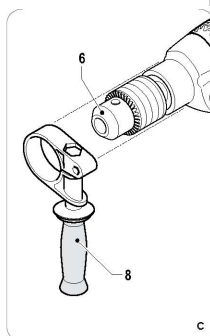
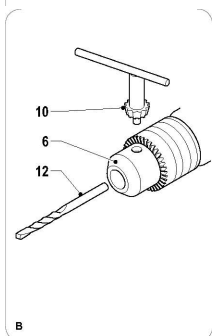
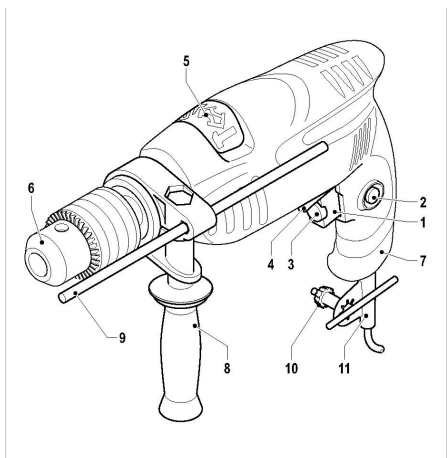
500W

**2 YEAR
GUARANTEE**

**Model:
IDR500REA**

PLEASE READ ALL INSTRUCTIONS BEFORE USE





The following symbols are used in the user manual or on the product:



Risk personal injury



Risk of electrical shock



Immediately remove the mains plug from the main if the mains cable becomes damaged and during cleaning and maintenance



Wear safety goggles



Wear hearing protection



Wear a dust mask



Wear safety gloves



Variable electronic speed



Double insulated

Additional safety warnings for impact drills

- Do not work materials containing asbestos. Asbestos is considered carcinogenic.
- Wear safety goggles.
- Wear hearing protection to avoid the risk of hearing loss.
- If necessary, use other protective means, such as safety gloves, safety shoes, etc.
- Hold the machine with one hand on the main grip and the other hand on the auxiliary grip. Risk of personal injury.
- Hold the machine by the insulated gripping surfaces where the accessory may not contact hidden wiring or the mains cable. If the accessory contacts a 'live' wire, the exposed metal parts of the machine can also become 'live'. Risk of electric shock.

Safety Warning

WARNING Read the enclosed safety warnings, the additional safety warnings and the instructions. Failure to follow the safety warnings and the instructions may result in electric shock, fire and/or serious injury. Keep the safety warnings and the instructions for future reference.





- Do not use accessories which are not specifically designed and recommended by the manufacturer. Risk of personal injury.
- Only use accessories that are suitable for use with the machine.
- Only use accessories with the correct dimensions. Make sure that the accessories are properly mounted.
- Inspect the machine and the accessories before each use. Do not use accessories which are bent, cracked, or otherwise damaged. If the machine or one of the accessories is dropped, inspect the machine or the accessory for damage. If necessary, replace the accessory.
- Let the machine run at no load in a safe area after mounting the accessories. If the machine vibrates strongly, immediately switch off the machine, remove the mains plug from the mains, and try to solve the problem.
- Make sure that the maximum speed for the accessory is larger than or the same as the maximum speed of the machine. Refer to the rating plate on the machine.
- Before use, remove all nails and other metal objects from the workpiece.
- Make sure that the workpiece is properly supported or fixed.
- Keep your hands away from the workpiece during use.

Never put the machine down on a table or a workbench before it has been switched off.

Electrical safety



Always check that the voltage of the power supply corresponds to the voltage on the rating plate.

- Do not use the machine if the mains cable or the mains plug is damaged.
- Only use extension cables that are suitable for the power rating of the machine with a minimum thickness of 1.5 mm². If you use an extension cable reel, always fully unroll the cable.

Main plug replacement (UK only)

If the moulded 3-pin plug attached to the unit is damaged and needs replacing, it is important that it is correctly destroyed and replaced by an approved BS 1363/5A fused plug and that the following wiring instructions are followed.

The wires in the mains cable are coloured in accordance with the following code: blue neutral brown live
As the colours of the wires in the mains cable of the unit may not correspond to the coloured markings identifying the terminals

in the plug, proceed as follows:

- The wire which is coloured blue must be connected to the terminal which is marked with the letter N or coloured black.
- The wire which is coloured brown must be connected to the terminal which is marked with the letter L or coloured red.

Technical data

Mains voltage 230-240 V~ Mains frequency 50 Hz
Power input 500 W No-load speed 0 - 3,000 /min
Impact rate 0 - 48,000 /min Max. drill bit diameter
Wood 25 mm
Concrete 13 mm
Steel 8 mm
Protection class IP 20
Weight 1.8 kg Sound pressure (Lpa) 83 dB(A) Acoustic power (Lwa) 94 dB(A)
Uncertainty (K)
Impact drilling mode
Drill into metal
Uncertainty (K)
Vibration level

The vibration emission level stated in this instruction manual has been measured in accordance with a standardised test given in IEC60745-1; it may be used to compare one tool with another and as a preliminary assessment of exposure to vibration when using the tool for the applications mentioned:

- using the tool for different applications, or with different or poorly maintained accessories, may significantly increase the exposure level
- The times when the tool is switched off or when it is running but not actually doing the job, may significantly reduce the exposure level

Protect yourself against the effects of vibration by maintaining the tool and its accessories, keeping your hands warm, and organizing your work patterns

Description

Figure (.A)

Your impact drill has been designed for drilling holes in wood, metal and plastics and for hammer drilling in brick and concrete.

1. On/off switch
2. Lock-on button
3. Speed adjustment wheel
4. Forward/reverse switch
5. Switch for drilling / hammer drilling
6. Chuck
7. Main grip
8. Auxiliary grip





- 9. Depth stop
- 10. Chuck key
- 11. Chuck key holder

Assembly



Before assembly, always switch off the machine and remove the mains plug from the mains.

Mounting and removing the drill bit (fig. B)

The machine is suitable for use of the following drill bits: -Wood (HSS) -Metal (HSS) -Concrete / masonry (hard metal)

Mounting

- Place the chuck key (10) into one of the holes in the chuck (6).
- Open the chuck (6) by turning the chuck key (10) counterclockwise.
- Insert the drill bit (12) into the chuck (6).
- Close the chuck (6) by turning the chuck key (10) clockwise.
- Remove the chuck key (10) from the chuck (6).

Removing

- Place the chuck key (10) into one of the holes in the chuck (6).
- Open the chuck (6) by turning the chuck key (10) counterclockwise.
- Remove the drill bit (12) from the chuck (6).
- Close the chuck (6) by turning the chuck key (10) clockwise.
- Remove the chuck key (10) from the chuck (6).

Mounting and removing the auxiliary grip (fig. C)

Mounting

- Loosen the auxiliary grip (8).
- Slide the auxiliary grip (8) over the chuck (6).
- Turn the auxiliary grip (8) to the required position.
- Tighten the auxiliary grip (8).

Removing

- Loosen the auxiliary grip (8).
- Remove the auxiliary grip (8) from the chuck (6).
- Tighten the auxiliary grip (8).

Mounting and removing the depth stop (fig. D)

The depth stop is used to set the maximum drilling depth.

Mounting

- Loosen the auxiliary grip (8).
- Insert the depth stop (9) through the hole in the

auxiliary grip (8).

- Set the depth stop (9) to the required position.
- Tighten the auxiliary grip (8).

Removing

- Loosen the auxiliary grip (8).
- Remove the depth stop (9) from the auxiliary grip (8).
- Tighten the auxiliary grip (8).

Switching on and off (fig. A)

- To switch on the machine, press the on/off switch (1). The further the on/off switch (1) is pressed, the higher the speed of the machine.
- To switch the machine to continuous mode, keep the on/off switch (1) pressed and simultaneously press the lock-on button (2).
- To switch off continuous mode, press the on/off switch (1) again.
- To switch off the machine, release the on/off switch (1).

Forward/reverse switch (fig. A)



Do not change the direction of rotation during use.

- For clockwise rotation, slide the forward/ reverse switch (4) to the left.
- For counterclockwise rotation, slide the forward/ reverse switch (4) to the right.

Setting the maximum drilling speed (fig. A)

Do not set the speed during use.

- Turn the speed adjustment wheel (3) clockwise to increase the maximum drilling speed.
- Turn the speed adjustment wheel (3) counterclockwise to decrease the maximum drilling speed.

Setting the operating mode (fig. E)

Do not change the operating mode during use.

- Set the switch (5) to position "A" for drilling.
- Set the switch (5) to position "B" for hammer drilling.

Hints for optimum use

- Clamp the workpiece.
- Firmly hold the machine with both hands.
- Place the drill bit on the workpiece.
- Switch on the machine.
- Do not apply too much pressure on the machine. Let the machine do the work.
- Switch off the machine and wait for the machine to come to a complete standstill before putting the machine down.





Equipment and its implementation into national right, power tools that are no longer usable must be collected separately and disposed of in an environmentally friendly way.

The product and the user manual are subject to change. Specifications can be changed without further notice.

Cleaning and Maintenance



Before cleaning and maintenance, always switch off the machine and remove the mains plug from the mains.

- Regularly clean the housing with a soft cloth. 0
- Keep the ventilation slots free from dust and dirt. If necessary, use a soft, moist cloth to remove dust and dirt from the ventilation slots.
- Regularly clean the chuck and the drill bit to avoid inaccuracies during use.

Replacing the drill bit (fig. B)

- To remove the drill bit (12), proceed as described in the section "Mounting and removing the drill bit".
- To mount the drill bit (12), proceed as described in the section "Mounting and removing the drill bit".

Warranty

Consult the enclosed warranty terms.

Environment



The product, the accessories, and the packaging must be sorted for environmentally friendly recycling. Only for EC countries

Do not dispose of power tools into domestic waste. According to the European Guideline 2002/96/EC for

Waste Electrical and Electronic





casals

2 YEAR GUARANTEE

Casals guarantees that this product has been thoroughly inspected and tested before being dispatched and is free from mechanical and electrical defects and complies with the applicable safety standards. However, should defects due to faulty material or workmanship develop, under normal domestic use, within 6 months from the date of purchase please return the product to the store from where it was purchased for a full refund or replacement.

The following conditions apply:

1. Please ensure you retain your receipt as this must be presented when making a claim under the terms of the guarantee. It is impossible to determine the guarantee period without proof of purchase, so please keep this in a safe place.
2. If a refund or exchange is required the product must be complete with all accessories, parts and packaging.
3. Missing parts will render the guarantee void.
4. Upon receipt of your appliance check it for any transport damage to ensure it is safe for use. Return it to the store as soon as possible for exchange if damaged. The guarantee is void if products are damaged after use, so please do not use the damaged product.
5. Your product is designed for normal domestic household use. Failure to read and comply with the instructions for use, cleaning and maintenance will render your guarantee void, so please read these instructions carefully to ensure your safety, and get the most effective use from the product.
6. **Any abuse, negligent, improper use will render the guarantee void and Creative Housewares (Pty) Ltd will not be liable for any loss or damage.**
7. This Guarantee will not apply if this tool is damaged by accident or from normal wear and tear.
8. Any attempted repair, or replacement of unauthorised parts will render the guarantee void, so please contact an authorised service centre or agent for any service or repair requirements.
9. **Accessories such as bits, blades, sanding disc, cutting lines, etc are excluded from this guarantee.**
10. **Normal consumables parts, such as carbon brushes, bearings, chucks, cord assembly's, spark plugs, recoil pulleys and bump head assembly's are specifically excluded from this guarantee.**

Extended 24 Month Limited Guarantee

- Casals takes pride in their product quality and therefore offer an extended 24 month limited guarantee from the original date of purchase to offer the consumer peace of mind on their purchase.
- Should defects due to faulty material or workmanship develop, under normal domestic use, within 24 months from the original date of purchase, please return the product to the store from where it was purchased for repair free of charge.
- Casals will however replace a product, if the cost of the repair is not commercially viable or if their ability to conduct repair effectively cannot be guaranteed.
- **NB:** The guarantee on replaced products will be from the original date of purchase.
- All repairs carry a 3 month guarantee even if this falls outside of the 2 year guarantee period. Casals will attempt to conduct repairs within reasonable industry standards but cannot be held responsible or liable for any circumstances not under their control.

Before returning your product, check for the following:

1. Your household mains supply socket is working and switched on.
2. The mains supply circuit is not overloaded (White trip switch on your DB board is off).
3. You have read the trouble shooting guide in your Instructions for Use.
4. All accessories and parts are present.

If service or repair becomes necessary outside the guarantee period, this service is still available however all transport/postage, spares and labour costs will be paid by the consumer. All chargeable repairs will require the consumers' approval in writing once the quote is accepted. Once the go-ahead has been received Casals will undertake to conduct the repair within a reasonable time and maintain the condition of the product as received.

For any assistance, service, queries and complaints please contact our Customer Care on 086 111 5006 or e-mail help@creativehousewares.co.za.





Be on the look-out for these Casals products at your local outlet:



CD4800RE



CD1200RE



ID500RE



ID710RE



BS76-710



OS150



PL82-710



HAG2000



AG115-710



AG230-2000



JS55



R1200E



CS184L

creative housewares

🏠 20 Tekstiel Street, Parow, Cape Town, 7493, South Africa

✉ P.O. Box 6156 Parow East, 7501, South Africa

☎ +27 86 199 1625 📠 +27 86 541 0065

Service Centre Share Call: 086 111 5006

🌐 www.creativehousewares.co.za

